

# Mono Crystalline Modules Detailed Specification

## Key Features



Monocrystalline modules designed for commercial and solar farm grid-tied applications



High power output and highest conversion efficiency of 16.51%



Anti-reflective and anti-soiling surface reduces power loss from dirt and dust



Outstanding performance in low-light irradiance environments



Excellent mechanical load resistance: Certified to withstand high wind loads(2400Pa) and snow loads(5400Pa)



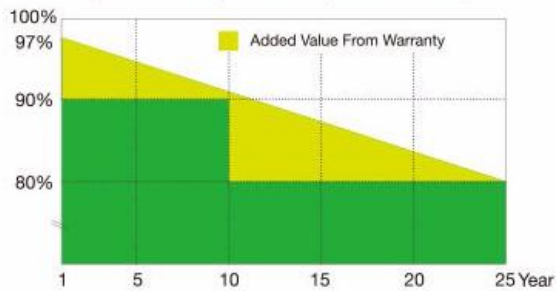
High salt and ammonia resistance certified by TÜV NORD

## Reliable Quality

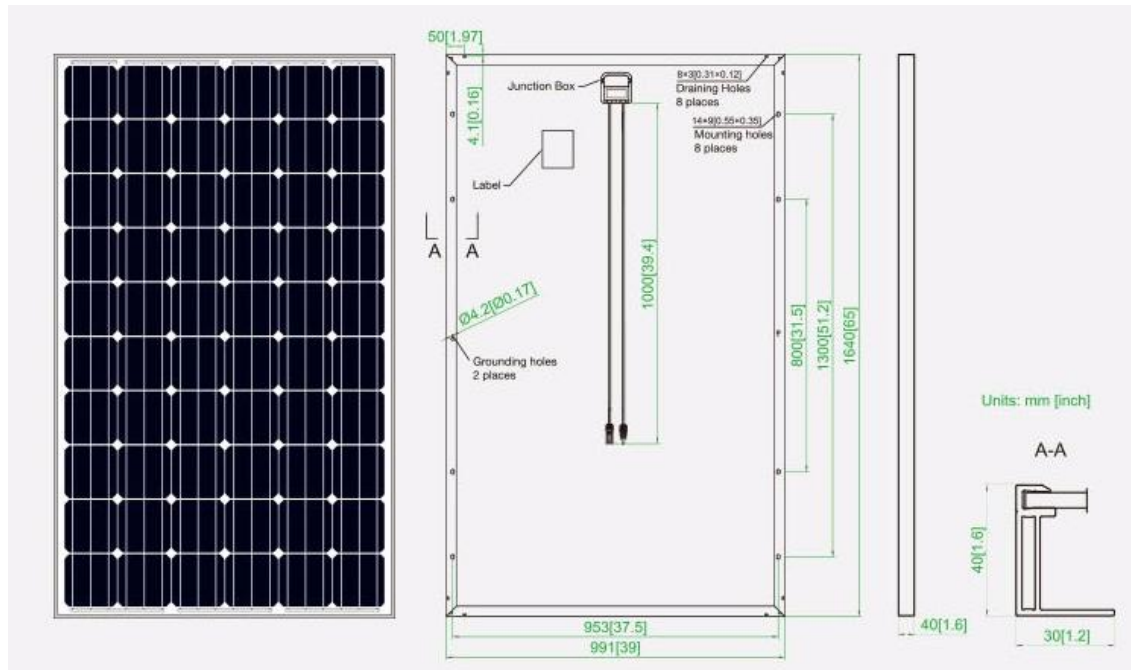
- Positive power tolerance: 0~+5W
- 100% EL double-inspection ensures modules are defects free
- Modules binned by current to improve system performance
- Potential Induced Degradation (PID) Resistant

## Superior Warranty

- 10-year product warranty
- 25-year linear power output warranty



Rated Maximum Power at STC (W)	250	255	260	265	270
Open Circuit Voltage (Voc/V)	37.72	37.90	38.08	38.26	38.46
Maximum Power Voltage (Vmp/V)	30.31	30.58	30.81	31.11	31.33
Short Circuit Current (Isc/A)	8.76	8.84	8.92	9.00	9.09
Maximum Power Current (Imp/A)	8.25	8.34	8.44	8.52	8.62
Module Efficiency [%]	15.29	15.59	15.90	16.21	16.51
Power Tolerance (W)	-0~+5W				
Temperature Coefficient of Isc (αIsc)	+0.059%/°C				
Temperature Coefficient of Voc (βVoc)	-0.330%/°C				
Temperature Coefficient of Pmax (γPmp)	-0.410%/°C				
STC	Irradiance 1000W/m <sup>2</sup> , Cell Temperature 25°C, Air Mass 1.5				



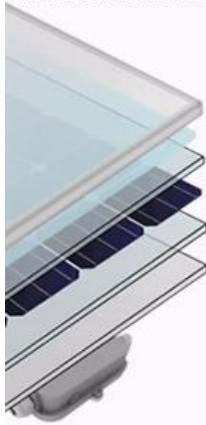
## Mechanical Parameters

Cell (mm)	Mono 156×156
Weight (kg)	18.2 (approx)
Dimensions (L×W×H) (mm)	1640×991×40
Cable Cross Section Size (mm <sup>2</sup> )	4
No. of Cells and Connections	60 (6×10)
Junction Box	IP67, 3 diodes
Connector	MC4 Compatible
Packaging Configuration	26 Per Pallet

## Working Conditions

Maximum System Voltage	DC 1000V (IEC)
Operating Temperature	-40°C~+85°C
Maximum Series Fuse	15A
Maximum Static Load, Front (e.g., snow and wind)	5400Pa (112 lb/ft <sup>2</sup> )
Maximum Static Load, Back (e.g., wind)	2400Pa (50 lb/ft <sup>2</sup> )
NOCT	45±2°C
Application Class	Class A

# PV MODULE ASSEMBLY LINE



Anodized aluminum frame  
Highly transparent tempered glass  
Encapsulant material-EVA  
Photovoltaic solar cells  
Encapsulant material-EVA  
Insulating back sheet  
Junction box

- ▶ 11 MODULES/HOUR
- ▶ 250W/MODULE
- ▶ 3 SHIFTS-8 HOURS
- ▶ 520 M<sup>2</sup>
- ▶ 5 OPERATORS/SHIFT

