



Macsun Solar Energy Technology Co., Limited

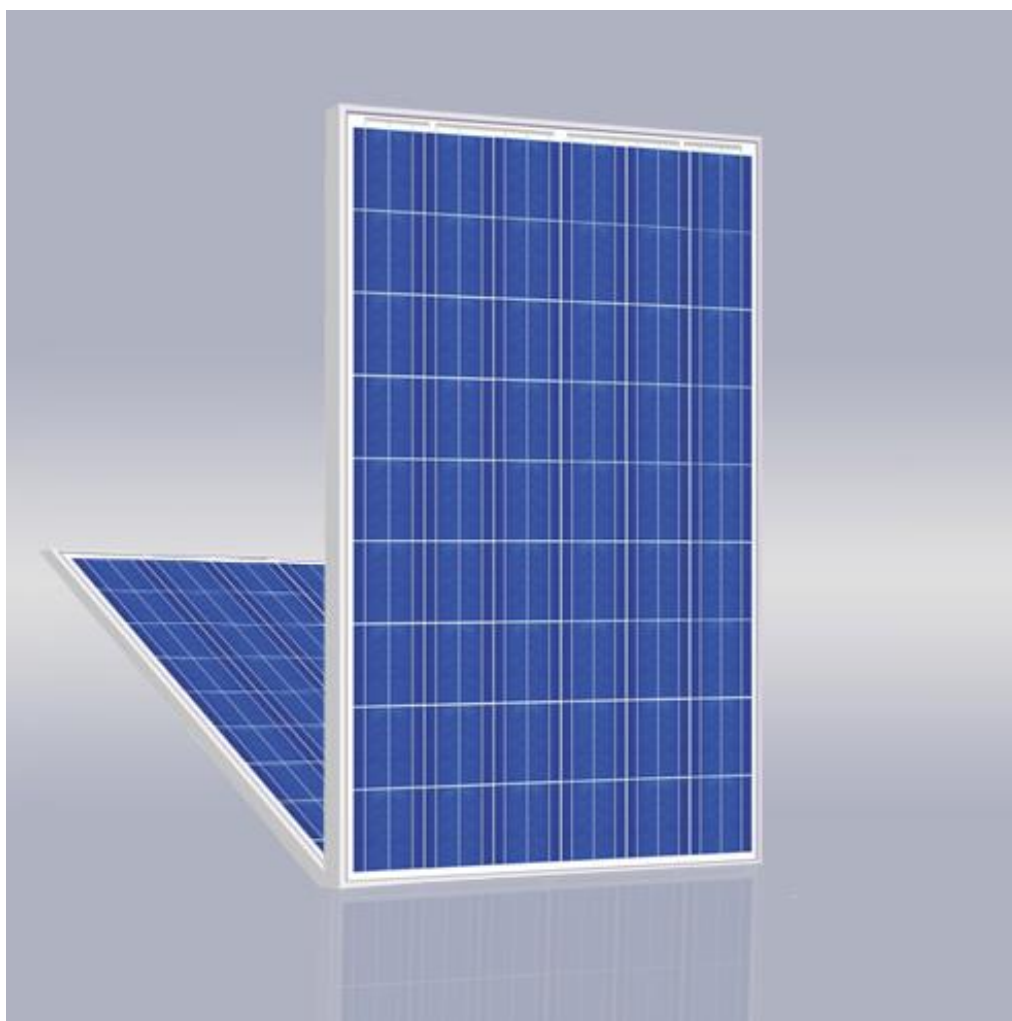
No. 1, Huaxing road, Shanghenglang, Dalang, LongHua, Shenzhen, China

T: 0086 755 8981 6120

F: 0086 755 6114 6933

E: sales@Macsun Solar.com

W: www.MacsunSolar.com



54x6"/MSP200P~MSP225P

POLY CRYSTALLINE MODULE

Excellent Quality

- >Automatic production and testing processes;
- >More than 18 IEC tests program in State-Level PV Laboratory of Risen;
- >Third party liability and quality insurance;
- >ISO9001,ISO14001 and OHSAS18001 management system.



Macsun Solar Energy Technology Co., Limited

No. 1, Huaxing road, Shanghenglang, Dalang, LongHua, Shenzhen, China

T: 0086 755 8981 6120

F: 0086 755 6114 6933

E: sales@Macsun Solar.com

W: www.MacsunSolar.com

Easy for installation

- >Low weight, convenient format;
- >Horizontal and Vertical installation applicable;
- >Compatible with all standard rooftop and ground mounting systems.

Maximum Yield

- >Only Positive tolerance assorted;
- >Photon test with TOP performance;
- >Averagely, installed projects actual power yield is 5% higher than theoretical yield.



Model	Pm(Wp)	Tolerance	Vm(V)	Im(A)	Voc(V)	Isc(A)	η
MSP200P	200W	0~+3%	25.90	7.73	32.70	8.10	>13.53%
MSP205P	205W	0~+3%	26.46	7.75	32.90	8.20	>13.86%
MSP210P	210W	0~+3%	27.00	7.78	32.90	8.25	>14.20%
MSP215P	215W	0~+3%	27.10	7.94	33.00	8.43	>14.54%
MSP220P	220W	0~+3%	27.10	8.12	33.00	8.50	>14.88%
MSP225P	225W	0~+3%	27.30	8.23	33.20	8.56	>15.22%

Valued at STC (AM 1.5, ,1000W/m² ,25°C)



Macsun Solar Energy Technology Co., Limited

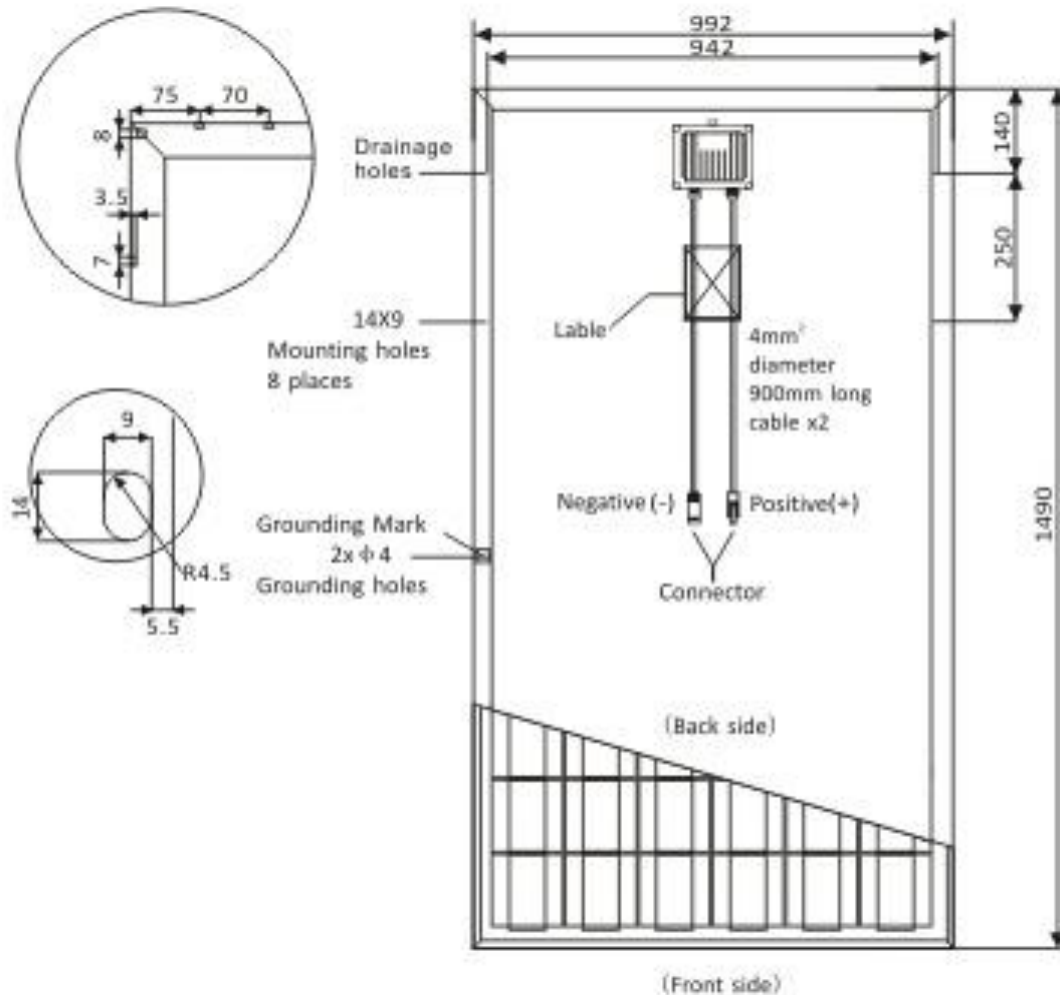
No. 1, Huaxing road, Shanghengleng, Dalang, LongHua, Shenzhen, China

T: 0086 755 8981 6120

F: 0086 755 6114 6933

E: sales@Macsun Solar.com

W: www.MacsunSolar.com



Temperature Coefficients

Temperature Coefficient of $V_{OC}(\beta)$	-0.31%/°C
Temperature Coefficient of $I_{SC}(\alpha)$	+0.034%/°C
Temperature Coefficient of P_{max}	-0.39%/°C
Nominal Operating Cell Temperature(NOCT)	45±2°C

Permissible Operating Conditions

Maximum system voltage	1000VDC
Operating temperature	-40~+85°C
Snow load	Max 5400 Pa
Wind load	Max 120km/h



Macsun Solar Energy Technology Co., Limited

No. 1, Huaxing road, Shanghenglang, Dalang, LongHua, Shenzhen, China

T: 0086 755 8981 6120

F: 0086 755 6114 6933

E: sales@Macsun Solar.com

W: www.MacsunSolar.com

Mechanical Characteristics

Number of mono crystalline solar cell	54pcsx6"
Aluminum frame,dimension	1490x992x40mm
Glass thickness	3.2mm
Weight	18kg
Junction box	IP65
Module	IP65
Tolerance of Rating	0~+3%
Number of bypass diodes	3

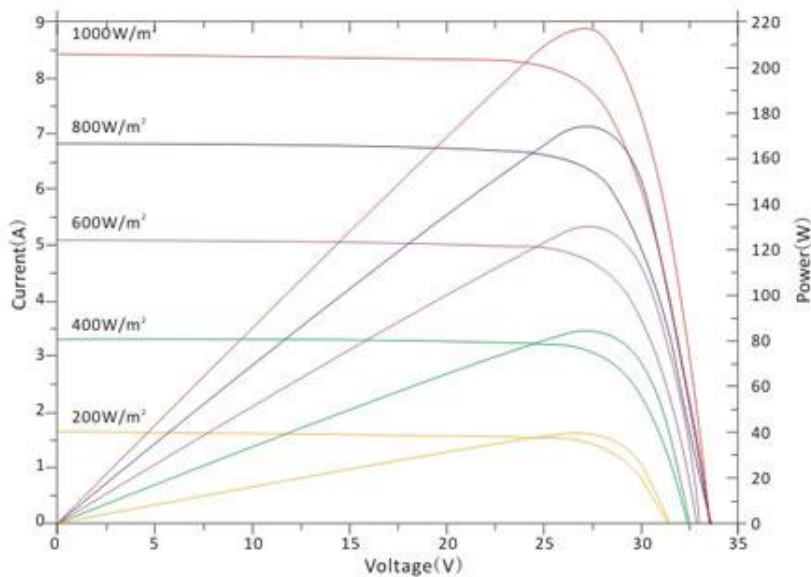
Warranty

10 years with 100% product warranty

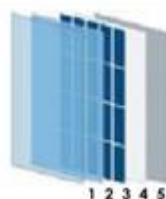
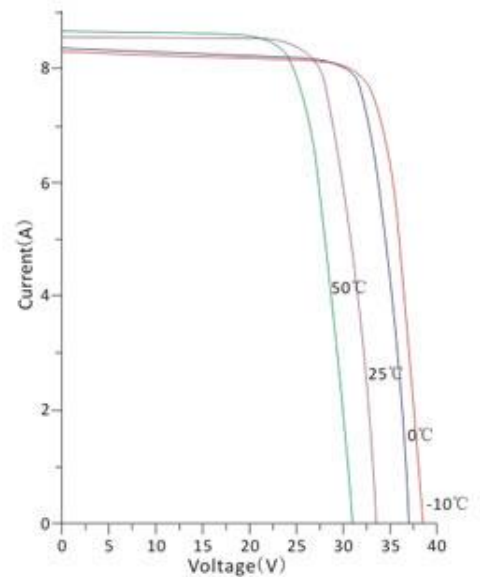
12years with 90% product warranty

25 years 80% rated power output

Current-Voltage & Power-Voltage Curve (215W)



I-V Curves of PV Module at Different Cell Temperatures (AM1.5,1000W/m²)



- ①. Tempered Glass
- ②. EVA (Ethylene Vinyl Acetate)
- ③. Solar Cells
- ④. EVA (Ethylene Vinyl Acetate)
- ⑤. Backsheet